

## DRAWBARS WITH BALL

### Series Maxxum 5120-5250/MX 80-140

- > **KBA8390B**  
straight  
item no. 8002901

### Series 3210-4250A/CX 90-100

- > **KBA8365B**  
straight  
item no. 8002898

### Series MX150-170

- > **KBA8367B**  
straight  
item no. 8002899

### Series STX275-535

- > **KBA8384W15**  
straight, 2 positions  
item no. 8004601

### Series STX380-530

- > **KBA88840B**  
straight  
item no. 8004762
- > **KBA8884W15**  
cranked  
item no. 8004763

### Series Magnum 7100/7200

- > **KBA88290B**  
cranked  
item no. 8003682
- > **KBA8829**  
straight  
item no. 8004826

### Series Magnum/MX Magnum

- > **KBA88368L**  
straight  
item no. 8002900

## DRAWBARS WITH PITON

- > **PBA5368**  
straight, 2 positions  
item no. 8005140

## FORCED STEERING PARTS

### for drawbars K80 und frames

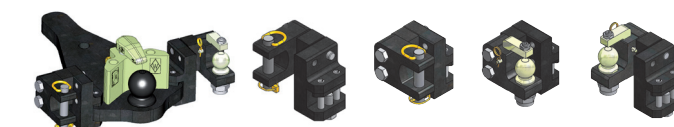
- > **ZWL-KBA-KU**  
item no. 8004771
- > **50-300**  
item no. 8002496
- > **50-15-304**  
item no. 8004444
- > **50-310**  
item no. 8002497
- > **50-15-304W15**  
item no. 8004539
- > **50-320**  
item no. 8002498
- > **ZWL30KU-AS**  
item no. 8004824
- > **ZWL30W15KU-AS**  
item no. 8004825

## FORCED STEERING PARTS

### for KB8293/KB8309/KB8314/KB8322/ KB8329NB30/KB8335

- > **50-15**  
item no. 8002213
- > **50-15-25**  
item no. 8002839

## MOUNTING EXAMPLES



GKN Walterscheid couplings are made for heavy duty work and mostly in use of forged parts

K80 ball is replaceable up to 2x  
series KU2000 with 360° free turnable pin

## WALTERSCHEID – YOUR PARTNER ON THE TRACTOR REAR

Hydraulic toplinks with original Walterscheid hook, lower link hooks operated from the driver's seat, hydr. lateral stabilizers for a safe and comfortable work in difficult terrain – only a few milestones in the world of coupling technology developed by GKN Walterscheid within the last 30 years.

The integration of the former Walterscheid Cramer GmbH is another highlight and a big step forward on our track to bring more convenience and safety into agricultural business. A wide range of coupling ladders inclusive different inserts let Walterscheid become a full service provider for high quality coupling systems for tractors and self propelled equipments. Focussing of safe and convenient coupling systems makes us to a partner for oem's and farmers.

**Walterscheid – we take agriculture forwards!**

### GKN Service International GmbH

Heiligenstädter Straße 17a  
D-37351 Dingelstädt  
phone: +49 36075 573-0  
fax: +49 36075 573-23

[couplings@gkn.com](mailto:couplings@gkn.com)  
[www.gkn-walterscheid.com](http://www.gkn-walterscheid.com)

For more information and technical details please call our hotline or download the latest version of the couplings catalogue on [www.gkn-walterscheid.com](http://www.gkn-walterscheid.com)

### GKN Walterscheid GmbH

Hauptstraße 150  
D-53797 Lohmar  
phone: +49 22 46 12-0  
fax: +49 22 46 74 777

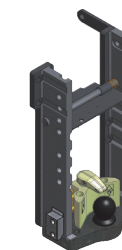
[info@gkn-walterscheid.com](mailto:info@gkn-walterscheid.com)  
[www.gkn-walterscheid.com](http://www.gkn-walterscheid.com)

We reserve the right to change without prior consultation. Use products only for the specified applications. We only guarantee constant quality. Reproduction, even in part, is only authorised with the written consent of GKN Walterscheid GmbH.

## WALTERSCHEID COUPLING SYSTEMS FOR CASE IH TRACTORS

### SERIES

3210-4250A  
743XL-1056XL  
C/CS/CVT/CVX/CX  
Magnum/Maxxum  
MX Magnum/MXM/MXU  
Puma  
STX





## FRAMES

### Series Maxxum 5120-5250/MX 80-140

- > **KU390L**  
rail size W=335/30/22 mm – 8 H  
item no. 8002459
- > **KU390K**  
rail size W=335/30/22 mm – 6 H  
item no. 8002620
- > **KU390KK**  
rail size W=335/30/22 mm – 7 H  
item no. 8002748
- > **KU390F**  
rail size W=335/30/22 mm – 6 H  
item no. 8002619

### Series 743XL - 856XL/955XL - 1056XL

- > **KU351BC**  
rail size W=335/30/22 mm – 9 H  
item no. 8004735

### Series C42-C70/CS48-CS75

- > **KU354L**  
rail size W=309/30/22 mm – 8 H  
item no. 8004742



### Series C42-C70/CS48-CS75

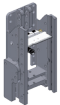
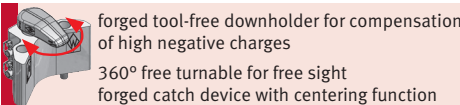
- > **KU354KK**  
rail size W=309/30/22 mm – 6 H  
item no. 8004743

### Series Magnum 225-335/MX 210-310 MX Magnum 180-270

- > **KU368L10**  
rail size W=322/30/22 mm – 8 H  
item no. 8002911
- > **KU368NKK**  
rail size W=329/32/25 mm – 6 H  
item no. 8004673

### Series 3210-4250A/CX 90-100

- > **KU365**  
rail size W=309/30/22 mm – 8 H  
item no. 8002453



### Series MXM 120-190/MXU 100-135 Puma 125-225/Puma CVX 165-225

- > **KU369L**  
rail size W=335/30/22 mm – 8 H  
item no. 8004655
- > **KU369KK**  
rail size W=335/30/22 mm – 6 H  
item no. 8004485

### Series 1255XL-1455XL

- > **KU386**  
rail size W=293/30/22 mm – 9 H  
item no. 8002458
- > **KU386KK**  
rail size W=293/30/22 mm – 6 H  
item no. 8002747

### Series CS 110-150/CVT 1135-1195 CVX 1170-1195/CVX 120-195

- > **KU356L**  
rail size W=335/30/22 mm – 8 H  
item no. 8004469
- > **KU356KK**  
rail size W=335/30/22 mm – 6 H  
item no. 8004468

- > **KU356F**  
rail size W=335/30/22 mm – 6 H  
item no. 8002452

### Series MX150-170

- > **KU367L**  
rail size W=309/30/22 mm – 8 H  
item no. 8002454
- > **KU367K**  
rail size W=335/30/22 mm – 5 H  
item no. 8002614
- > **KU367KK**  
rail size W=309/30/22 mm – 5 H  
item no. 8002741



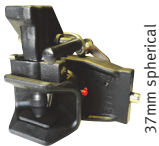
newest flexing-technology and modular design  
for flexible part design

## FRAMES



## ADJUSTABLE MODELS

reference	rail size (mm)	item no.
KU2000/293NB	293/30/22	8004184
KU2000/309NB	309/30/22	8004187
KU2000/314NB*	314/30/20	8004322
KU2000/322NB	322/30/22	8004191
KU2000/329NB30*	329/30/20	8004326
KU2000/329NBFBF	329/32/25	8004342
KU2000/335NB	335/30/22	8004182



KU293/8400	293/30/22	8003695
KU5410/309	309/30/22	8003697
KU5410/314*	314/30/20	8004702
KU5410/322	322/30/22	8003698
KU5410/329-30*	329/30/20	8004690
KU5410/329	329/32/25	8003699
KU5410/335	335/30/22	8003700



KU2000/293NA5	293/30/22	8004281
KU2000/309NA5	309/30/22	8004185
KU2000/314NA5*	314/30/20	8004686
KU2000/322NA5	322/30/22	8004189
KU2000/329NA530*	329/30/20	8004687
KU2000/329NA5	329/32/25	8004283
KU2000/335NA5	335/30/22	8004284



KB8293	293/30/22	8002574
KB8309	309/30/22	8002576
KB8314*	314/30/20	8004705
KB8322	322/30/22	8002578
KB8329/NB30*	329/30/20	8003675
KB8329	329/32/25	8002579
KB8335	335/30/22	8002580



KI8293	293/30/22	8002584
KI8309	309/30/22	8002585
KI8314*	314/30/20	8002587
KI8322	322/30/22	8002588
KI8329NB30*	329/30/20	8003685
KI8329	329/32/25	8002589
KI8335	335/30/22	8002590



\*properly for OEM-frame

## ADJUSTABLE MODELS

reference	rail size (mm)	item no.
PB5293N	293/30/22	8003244
PB5309N	309/30/22	8003245
PB5314N*	314/30/20	8004746
PB5322N	322/30/22	8003247
PB5329N30*	329/30/20	8004747
PB5329N	329/32/25	8003248
PB5335N	335/30/22	8003249

\*properly for OEM-frame

## MORE MODELS

- > **KU2000/890B**  
automatic 37mm  
item no. 8003999
- > **KU2000/829NB**  
automatic 37mm  
item no. 8004199
- > **KU2000/829B**  
automatic 37mm  
item no. 8003995
- > **KU2000/886BFB**  
automatic 37mm  
item no. 8004286
- > **KU2000/950NB**  
automatic 37mm  
item no. 8004202
- > **KU835**  
manual pin  
item no. 8002465
- > **KU830/8400**  
manual pin  
item no. 8003702
- > **KU850/8400**  
manual pin  
item no. 8003687
- > **KU930/94008**  
manual pin  
item no. 8004044
- > **KI8886**  
K80 ball coupling  
item no. 8002596
- > **KI8890**  
K80 ball coupling  
item no. 8002597

